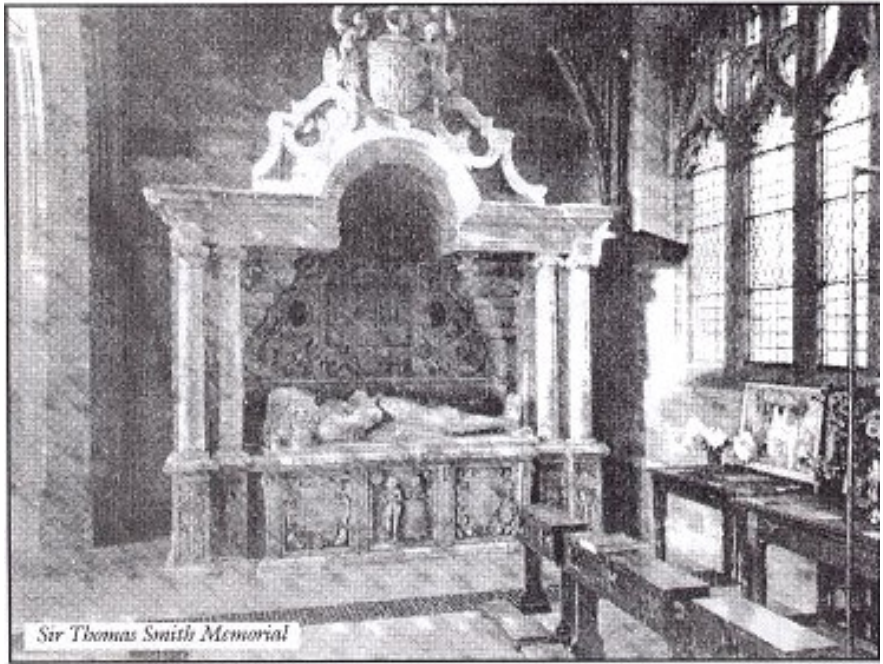


Records and Memorials

A survey of the estates of the Bishop of Lichfield in 1298 gives details of the manor of Wybunbury which had orchards and a water mill. Fields with names such as 'hoggerudings' and 'hayrading' and 'schepecroft' were let for 6d per acre. A book published 1656 describes 'Wibbunbury, a Church-town, and a Parish Church to a great Precinct, and on every side so garnished and adorned with the Seats and Habitations of Baronets, Knights and Gentlemen, as is scarce to be found the like in any Country Parish'. A memorial brass dated 1513 depicting . . . 'Rafe Dellyys Esquier of Dodenton and Kateryn his wife' . . . is now in the new parish church. Other memorials have been lost or are now elsewhere. A great marble edifice to Sir Thomas Smith of Hough who died in 1614 and his wife Anne is now in Nantwich church, but was formerly in Wybunbury church. Stained glass windows from the 15th century church, showing two members of the Delves family, are preserved at Broughton in Staffordshire.



Sir Thomas Smith Memorial